

New Holstein, WI

LOT	STREET ADDRESS	ACRES
1	Kennedy Drive	4.31
2	Kennedy Drive	1.0
3	Kennedy Drive	3.9
4	Kennedy Drive	3.25
5	Kennedy Drive	2.94
6	Kennedy Drive	4.0
7	Altona Ave./Hayton Rd./Harding St.	0.9
8	Altona Ave./Hayton Rd./Harding St.	0.9

LOT	STREET ADDRESS	ACRES
A	Monroe Street	7.5
B	Michigan Ave./Jefferson St.	35.7
C	Michigan Ave./Jefferson St.	15.8
D	Michigan Ave./Jefferson St.	0.9
E	Michigan Ave./Jefferson St.	14.2
F	Mason St./Taft Ave.	1.06
G	Mason St./Taft Ave.	1.06
H	Mason St./Taft Ave.	1.01



For more information:

Dane Checolinski
920.344.8732 • danec@naipfefferle.com



CLICK HERE TO VIEW ALL OUR LISTINGS AT: naipfefferle.com

Welcome to an array of golden opportunities spread across the vibrant cityscape of New Holstein! With multiple parcels available for commercial development, you have the chance to choose the perfect location to realize your business or investment aspirations. From lots on the main thoroughfare to industrial zones, each parcel offers unique advantages tailored to various ventures. Additionally, the City of New Holstein (pop. 3,100) is eager to support your development endeavors by considering incentives through Tax Increment Financing Districts (TIDs) and low-interest loan program.

About New Holstein



While the countryside provides beautiful scenery and great recreation, the city is a special place to raise a family, make a home and do business.

Residents and visitors escape to the great outdoors all year round to bike, golf, snowmobile, fish, hunt, swim and enjoy the many other activities the New Holstein area offers. Without a doubt, with its unique location and easy access to the surrounding larger cities, New Holstein is definitely one of Wisconsin's most convenient and pleasing communities. It is situated within a 30 mile radius of Manitowoc, Sheboygan, Fond du Lac and Appleton.

With a population slightly over 3100 New Holstein has an excellent school system, a municipal airport, beautiful parks, a viable manufacturing employment base and is a desirable location for all ages.

DEMOGRAPHICS (3, 5 & 10 MILE RADIUS)



POPULATION

3 MILES:	4,428
5 MILES:	10,396
10 MILES:	23,988



AVERAGE INCOME

3 MILES:	\$101,719
5 MILES:	\$95,361
10 MILES:	\$99,601



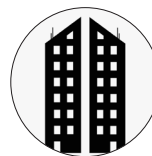
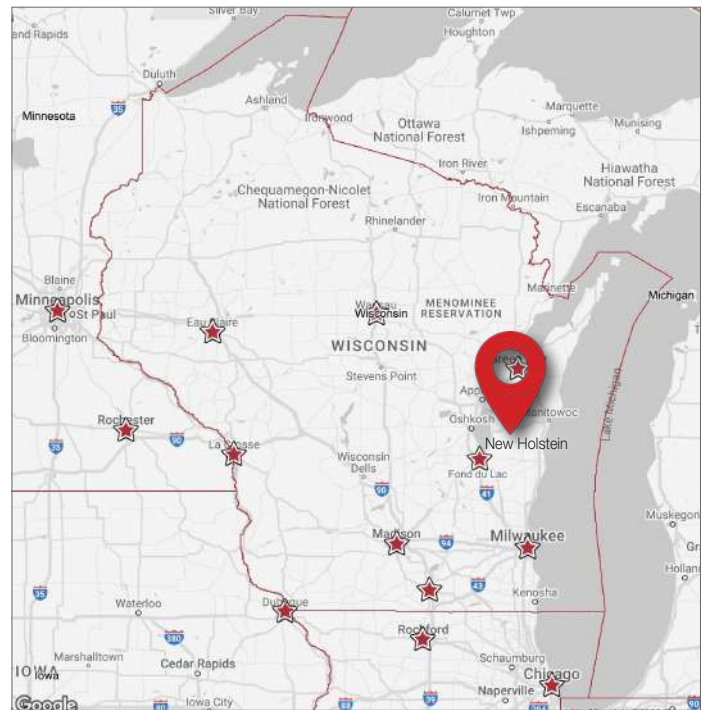
AVERAGE HOUSEHOLDS

3 MILES:	1,959
5 MILES:	4,545
10 MILES:	10,520



EMPLOYEES

3 MILE:	1,407
5 MILES:	3,101
10 MILES:	10,895



BUSINESSES

3 MILE:	123
5 MILES:	284
10 MILES:	703

KENNEDY DRIVE - LOTS 1-5



	PRICE	PARCEL SIZE	ZONING
1	\$107,750	4.31 ACRES	LIGHT INDUSTRIAL
2	\$119,000	1 ACRE	LIGHT INDUSTRIAL
3	\$97,500	3.9 ACRES	LIGHT INDUSTRIAL
4	\$81,250	3.25 ACRES	LIGHT INDUSTRIAL
5	\$55,860	2.94 ACRES	LIGHT INDUSTRIAL

*NOTE: ALL PARCELS ARE LOCATED IN TID.
LOTS 2, 3 & 4 ARE DIVISIBLE.*

KENNEDY DRIVE - LOT 6



	PRICE	PARCEL SIZE	ZONING
6	\$100,000	4.0 ACRES	R-3 RESIDENTIAL PERFECT FOR MULTI-FAMILY

ALTONA AVE./HAYTON RD./HARDING ST. - LOTS 7 & 8



	PRICE	PARCEL SIZE	ZONING
7	\$21,750	0.9 ACRES	LIGHT INDUSTRIAL
8	\$22,750	0.9 ACRES	LIGHT INDUSTRIAL

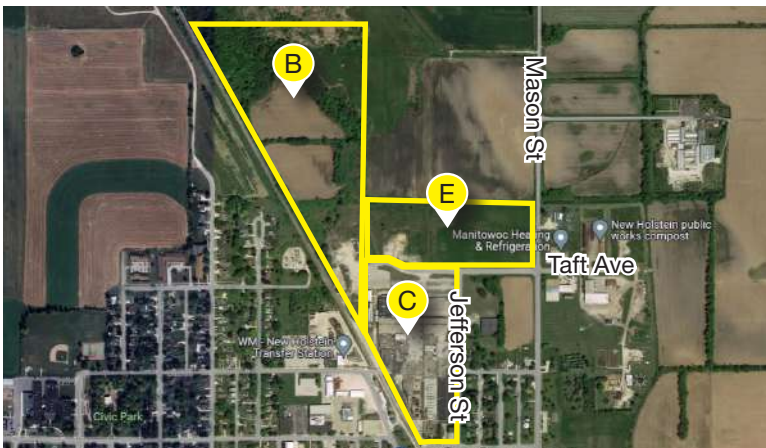
NOTE: BOTH PARCELS ARE LOCATED IN TID.

MONROE STREET - LOT A



	PRICE	PARCEL SIZE	ZONING
A	\$112,500	7.5 ACRES	HEAVY INDUSTRIAL BEST USE WOULD BE RESIDENTIAL

MICHIGAN AVE./JEFFERSON ST. - LOT B, C & E



	PRICE	PARCEL SIZE	ZONING
B	\$15,000/ACRE	35.7 ACRES	HEAVY INDUSTRIAL
C	\$30,000/ACRE	15.8 ACRES	HEAVY INDUSTRIAL
E	\$18,000/ACRE	14.2 ACRES	HEAVY INDUSTRIAL

LOTS C & E ARE LOCATED IN TID.

MICHIGAN AVE./JEFFERSON ST. - LOT D



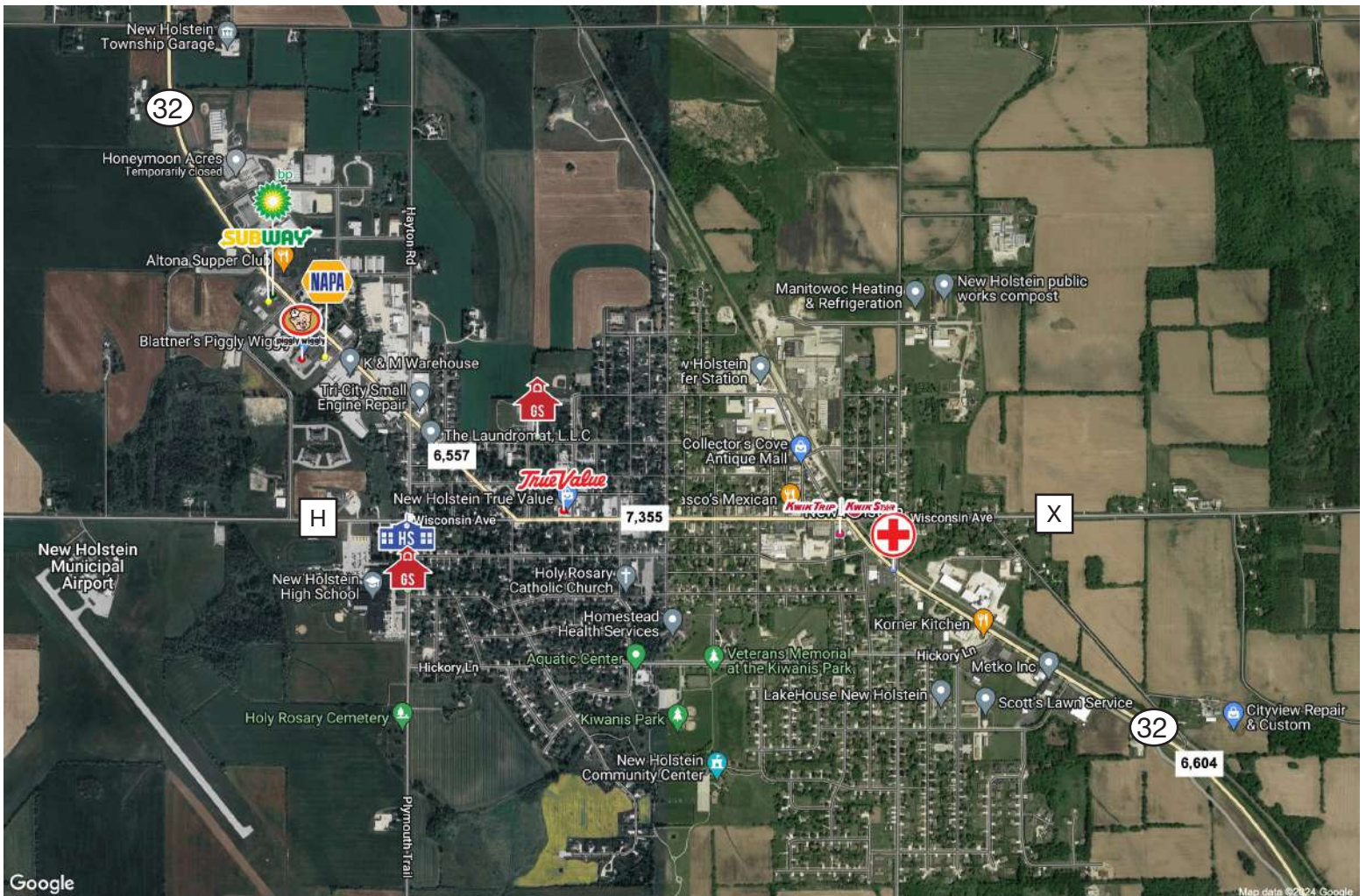
	PRICE	PARCEL SIZE	ZONING
D	\$46,000	0.9 ACRES	HEAVY INDUSTRIAL PERFECT FOR RESIDENTIAL DEVELOPMENT

MASON STREET/TAFT AVENUE - LOTS F, G & H



	PRICE	PARCEL SIZE	ZONING
F	\$19,997	1.06 ACRES	LIGHT INDUSTRIAL
G	\$19,997	1.06 ACRES	LIGHT INDUSTRIAL
H	\$19,054	1.01 ACRES	LIGHT INDUSTRIAL

Merchants & Traffic Counts Map



THE INFORMATION CONTAINED HEREIN WAS OBTAINED FROM SOURCES BELIEVED RELIABLE, HOWEVER, NAI PFEFFERLE MAKES NO GUARANTEES, WARRANTIES, OR REPRESENTATIONS AS TO THE ACCURACY THEREOF. THE PRESENTATION OF THIS PROPERTY IS SUBMITTED SUBJECT TO ERRORS, OMISSIONS, CHANGE OF PRICE OR OTHER CONDITIONS, PRIOR SALE OR LEASE, OR WITHDRAWAL WITHOUT NOTICE.

200 E. Washington Street
Suite 2A
Appleton, WI 54911
920.968.4700

960 Hansen Road
Green Bay, WI 54304
920.884.5000

3414 Mill Road
Sheboygan, WI 53083
920.783.6330

327 N. 17th Avenue
Suite 303
Wausau, WI 54401
715.261.2922

STATE OF WISCONSIN BROKER DISCLOSURE



Wisconsin law requires all real estate licensees to give the following information about brokerage services to prospective customers.

Prior to negotiating on your behalf the Brokerage firm, or an agent associated with the firm, must provide you the following disclosure statement.

Disclosure to Customers

You are a customer of NAI Pfefferle (hereinafter Firm). The Firm is either an agent of another party in the transaction or a subagent of another firm that is the agent of another party in the transaction. A broker or a salesperson acting on behalf of the Firm may provide brokerage services to you. Whenever the Firm is providing brokerage services to you, the Firm and its brokers and salespersons (hereinafter Agents) owe you, the customer, the following duties:

- The duty to provide brokerage services to you fairly and honestly.
- The duty to exercise reasonable skill and care in providing brokerage services to you.
- The duty to provide you with accurate information about market conditions within a reasonable time if you request it, unless disclosure of the information is prohibited by law.
- The duty to disclose to you in writing certain Material Adverse Facts about a Property, unless disclosure of the information is prohibited by law.
- The duty to protect your confidentiality. Unless the law requires it, the Firm and its Agents will not disclose your confidential information or the confidential information of other parties.
- The duty to safeguard trust funds and other property held by the Firm or its Agents.
- The duty, when negotiating, to present contract proposals in an objective and unbiased manner and disclose the advantages and disadvantages of the proposals.

Please review this information carefully. An Agent of the Firm can answer your questions about brokerage services, but if you need legal advice, tax advice, or a professional home inspection, contact an attorney, tax advisor, or home inspector. This disclosure is required by section 452.135 of the Wisconsin statutes and is for information only. It is a plain-language summary of the duties owed to a customer under section 452.133(1) of the Wisconsin statutes.

Confidentiality Notice to Customers

The Firm and its Agents will keep confidential any information given to the Firm or its Agents in confidence, or any information obtained by the Firm or its Agents that a reasonable person would want to be kept confidential, unless the information must be disclosed by law or you authorize the Firm to disclose particular information. The Firm and its Agents shall continue to keep the information confidential after the Firm is no longer providing brokerage services to you.

No representation is made as to the legal validity of any provision or the adequacy of any provision in any specific transaction.

The following information is required to be disclosed by law:

1. Material Adverse Facts, as defined in section 452.01(5g) of the Wisconsin Statutes (see definition below).
2. Any facts known by the Firm or its Agents that contradict any information included in a written inspection report on the property or real estate that is the subject of the transaction.

To ensure that the Firm and its Agents are aware of what specific information you consider confidential, you may list that information below or provide that information to the Firm or its Agents by other means. At a later time, you may also provide the Firm or its Agents with other information you consider to be confidential.

CONFIDENTIAL INFORMATION

NON-CONFIDENTIAL INFORMATION

(the following information may be disclosed to the Firm and its Agents)

(Insert information you authorize to be disclosed, such as financial qualification information.)

Definition of Material Adverse Facts

A “Material Adverse Fact” is defined in Wis. Stat. 452.01(5g) as an Adverse Fact that a party indicates is of such significance, or that is generally recognized by a competent licensee as being of such significance to a reasonable party, that it affects or would affect the party’s decision to enter into a contract or agreement concerning a transaction or affects or would affect the party’s decision about the terms of such a contract or agreement.

An “Adverse Fact” is defined in Wis. Stat. 452.01(1e) as a condition or occurrence that a competent licensee generally recognizes will significantly and adversely affect the value of the property, significantly reduce the structural integrity of improvements to real estate, or present a significant health risk to occupants of the property; or information that indicates that a party to a transaction is not able to or does not intend to meet his or her obligations under a contract or agreement made concerning the transaction.

Notice About Sex Offender Registry

You may obtain information about the sex offender registry and persons registered with the registry by contacting the Wisconsin Department of Corrections on the Internet at <http://www.doc.wi.gov> or by telephone at 608-240-5830.